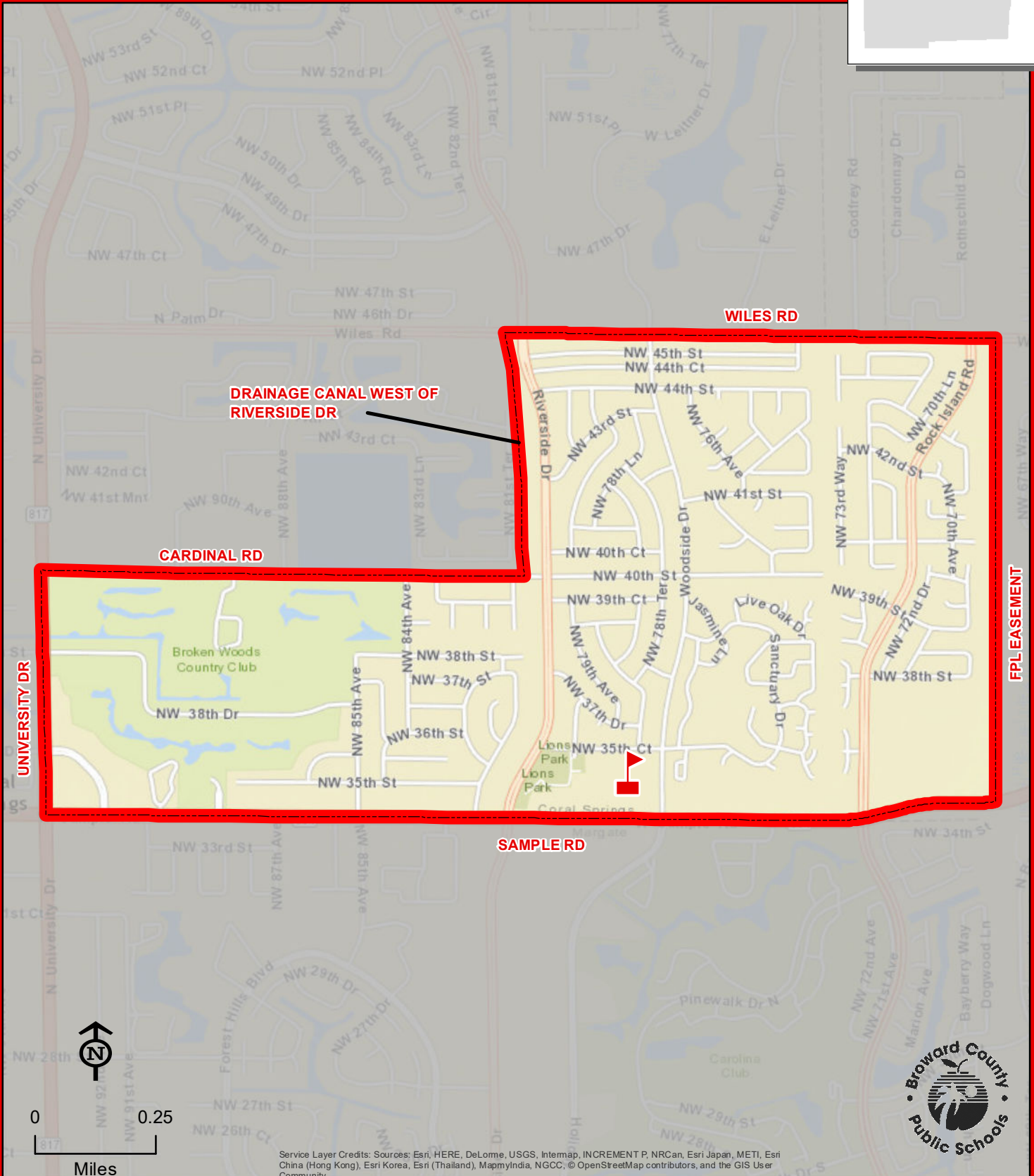
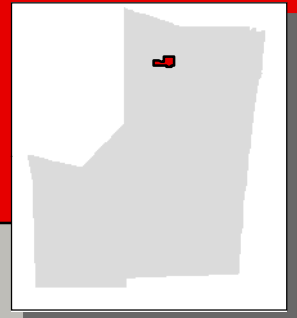


JAMES S. HUNT ELEMENTARY SCHOOL

7800 NW 35 COURT
CORAL SPRINGS, FLORIDA 33065
754-322-6500

Innovative Program



FPLEASEMENT

JAMES S. HUNT

THIS MAP IS FOR CONCEPTUAL PURPOSES ONLY AND SHOULD NOT BE USED FOR LEGAL BOUNDARY DETERMINATIONS